



Eastern Plant Hire



Eastern Plant Hire Capability Statement

✉ admin@easternplanthire.com.au

☎ 1300 037 437

🌐 easternplanthire.com

A Diverse Range of Plant & Equipment Hire across Melbourne, Sydney and Brisbane



Diverse Earthmoving Solutions

Eastern Plant Hire (EPH) is Australia's leading earthmoving agency. At EPH, we provide you earthmoving solutions that save you time and money.

Our services can be commissioned either independently or fully integrated which gives you the ability to easily obtain a total resource management solution. Our aim is to give you, our client, the power to access a range of resources that give you the competitive advantage in site development. EPH can provide you solutions for:

- Material disposal and management;
- Clean fill sites;
- Resources management;
- Solutions soil removal and disposal;
- Clean fill supply and disposal;
- Structural fill removal and supply; and
- Reclamation and remediation.

Plant and Equipment Hire Available Across Melbourne, Sydney and Brisbane

As one of Australia's leading plant hire agencies, we offer an extensive range of readily available and cost-effective earthmoving equipment across Melbourne, Sydney and Brisbane.

Our range includes:

- Tandems;
- Semi-trailers;
- Truck and trailers;
- Floats;
- Backhoes;
- Dozers;
- Excavators;
- Graders;
- Rollers;
- Water carts;
- Street sweepers;
- Skid steers;
- Posi-tracks;
- Traxcavators; and
- Dump trucks.

“EPH is committed to delivering you “The Best Service on Earth.” Our vision is to become the most competitive, consistent and reliable plant hire agency in Australia.

After successfully completing some of Australia's most noteworthy infrastructure projects, we guarantee that we have the capability of providing the best experience and service in the earthmoving industry. You can be assured that when you hire from EPH, we will complete your project efficiently and effectively in accordance with your specifications.

From The Ground Up

EPH was originally formed as a small plant hire agency in 1996 under the leadership of our present Directors, Michael and David Willson.

From 1998 to 2004 we developed and grew steadily. Overtime, we won a greater share of the earthmoving market due to our ability to build and consolidate a strong reputation for customer service excellence. In late 2004, we tendered and won the cartage works on the Eastlink project. This project was our first major achievement and a remarkable milestone in our history.

Having successfully managed the material logistics of one of the largest infrastructure projects in Australia, we proved that we are capable, knowledgeable and structurally sound to successfully deliver a project of that magnitude. Since then, we have been engaged in many of Australia's largest infrastructure projects.

Today we continue to grow and retain our position as the leading plant hire agency in Australia with a presence in Melbourne, Sydney and Brisbane.

Plant Hire With Heart

Our experience in delivering major infrastructure projects throughout Australia is unparalleled which, in part, is due to consistent approach using the following five principles:

- 1 Safety;
- 2 System innovation;
- 3 Customer service excellent;
- 4 Competitive market pricing; and
- 5 Supplying quality equipment.



Our Core Values



Loyalty + Trust



Commitment + Service



Passion + Initiative

Our Vision

To become the best service provider in the industry, delivering The Best Service on Earth!

Our Mission

Consolidate our position as the premier supplier of earthmoving equipment and excavated materials within the earthmoving industry through consistently providing reliable solutions to our clients and suppliers.

Our Stats

ESTABLISHED IN

1996

EPH HAS GROWN INTO
A NATIONAL ENTERPRISE



ACROSS THREE STATES
WITH AN AMBITION
TO CONTINUE INTO
NEW MARKETS

National Independent
Contractor database
WHICH REPRESENTS

IN EXCESS OF
8,000 UNITS

OF EARTHMOVING
MACHINES
AND EQUIPMENT

Within VIC, NSW and QLD
EPH HAVE
a network of over

3,000
INDEPENDENT
CONTRACTORS

representing close to

10,000
ITEMS OF EQUIPMENT

EPH SERVICE OVER

500

CLIENTS

NATIONALLY PER MONTH

RANGING FROM
Tier 1 Contractors
to private backyard
IMPROVEMENTS

WORKFORCE
of over

80 
people
NATIONALLY

WE PRIDE
OURSELVES ON
PROVIDING



THE BEST
SERVICE
ON EARTH

ISO9001
ACCREDITED
NATIONWIDE

EPH OWN A FLEET
OF APPROXIMATELY
40 TRUCKS



and APPROXIMATELY
20 ITEMS OF
EQUIPMENT

COMBINED TURNOVER
of over
\$180m
in 2018-2019

EACH DAY EPH
PROVIDES AGENCY
OPPORTUNITIES TO

over
1,000

AUSTRALIAN
SMALL AGENCIES



We also have an App!

Since we began in 1996, innovation has been a guiding philosophy in the evolution of EPH. This mobile app has been developed to provide smarter service solutions to both our clients and operators.

EPH Victoria Spotlight

From humble beginnings in Victoria (VIC), EPH has been engaged in many landmark projects, having worked on over 20 infrastructure projects with the Victorian Government, including overpasses, road upgrades, rail works, tunnels and bypasses.

After successfully working on the Eastern Freeway Extension, Craigieburn and Hallam Bypass, we were appointed as the preferred cartage organiser for the \$2.5 billion Eastlink Project. This range of exclusive industry experience and insight developed us into one of Australia's premier plant hire agencies, and was the catalyst for our involvement in future major projects such as the M80 Upgrade, Deer Park Bypass and Nagambie Bypass, to name a few.

Ever since that first major contract win, EPH has been working hard to maintain a standard of service that has seen our business grow, as the demand for machines and trucks increased across the state.

In 2019, there were three major projects active under Rail Project Victoria: Melbourne Airport Rail Link, Metro Tunnel and Regional Rail Revival.

Since the beginning, we've worked across both regional Victoria and in Melbourne, and we are proud to continue to shape both the local area and the state.

Read on to learn about our achievements and involvement in projects throughout VIC.

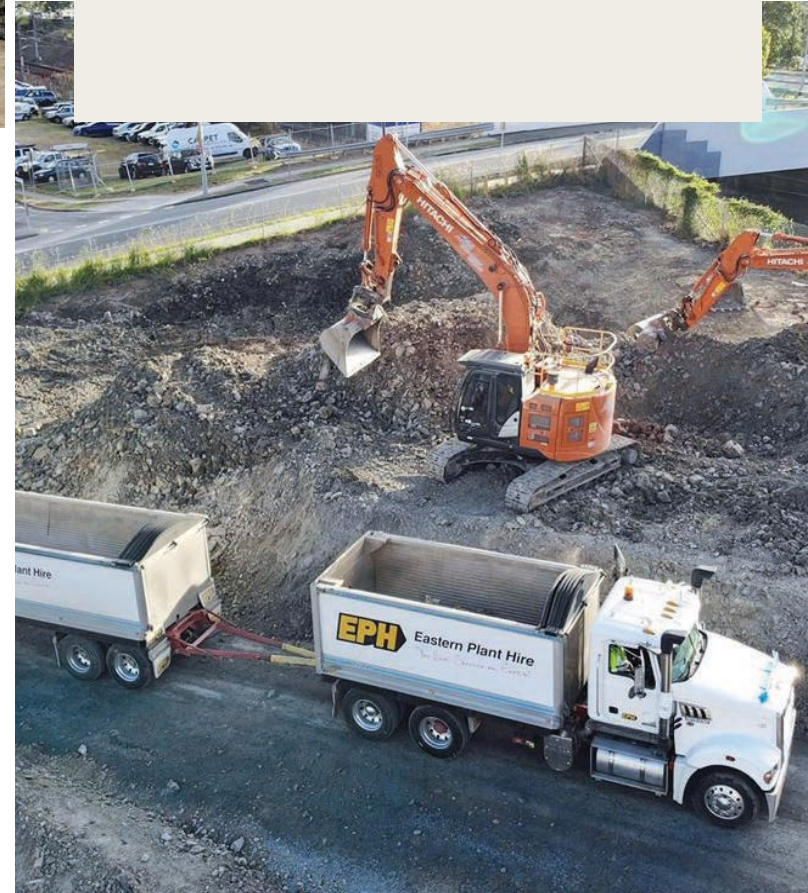




West Gate Tunnel

Since its start in 2018 we have been actively assisting the West Gate Tunnel Project with their materials cartage and earthmoving machine hire.

As we have a massive fleet of trucks and a network of subcontractors we are easily able to supply materials 24 hours, 7 days a week on the West Gate Tunnel Project. With the tunnel boring machines estimated to pump out 1.5 million cubic metres of rock and debris over the project period, a steady supply of trucks is needed to keep things running on time.



Melbourne Metro Tunnel Rail Infrastructure Alliance

We have been working with the Rail Infrastructure Alliance (RIA), an alliance made up of CPB Contractors and, John Holland and AECOM, on the Melbourne Metro Tunnel Project.

EPH have committed trucks and earthmoving equipment to the project. Thanks to our extensive network of subcontractor drivers we are able to keep up with the demands of the various RIA construction sites and help keep the work on time and on budget. Adding to that the construction period will also see around 1000 people employed on the RIA package, including almost 100 apprentices, trainees and engineering cadets.



Level Crossing Removal Project

The Level Crossing Removal Project is the largest project of its kind in VIC. We have worked on a number of level crossing removals, namely the North East Program Alliance, including the removal of two level crossings at Lower Plenty Road and Grange Road, the rebuild of Rosanna Station and the duplication of the Hurstbridge train line.

We committed plant and trucks to the project that lasted 2 years. Over four months, there were 3,700 cubic metres of soil excavated to create a new tunnel under Darebin Street to make way for a new section of the Hurstbridge track.

CityLink Tulla Widening

We have undertaken a great deal of earthmoving work on projects that are a part of Victoria's Big Build. This includes the \$1.34 billion CityLink Tulla Widening that aimed to increase capacity by 30 per cent through road upgrades and additional lanes.

EPH assisted in the materials cartage and supply of earthmoving machinery to the CityLink Tulla Widening project in the Bulla Road to Power Street section. This was the larger of the two sections of work for the CityLink Tulla Widening, encompassing 16km of the 24km total.



EPH New South Wales Spotlight

EPH have had a presence in the New South Wales (NSW) earthmoving industries for a number of years, with even more projects in the pipeline.

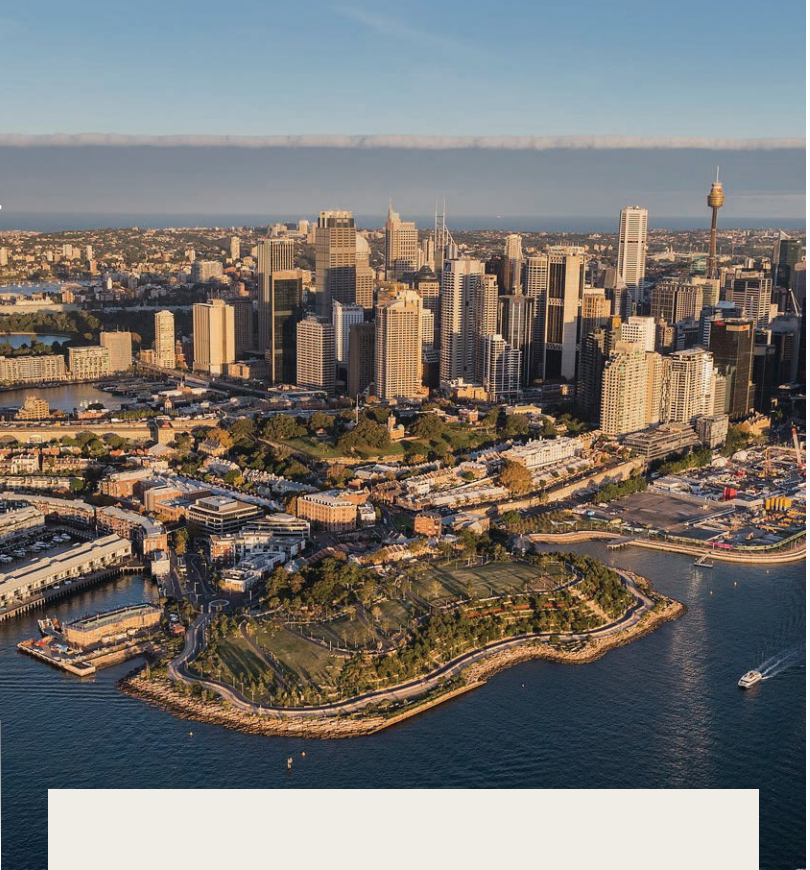
NSW has had some of the biggest construction and infrastructure projects in the country over the past few years and we have worked hard to secure major contracts on projects that are changing its landscape, from major tunnelling for cars and trains in the city, statewide upgrades, and to national freight routes.

Our extensive experience in coordinating truck haulage services on a daily basis ensure that work is able to run smoothly.

Sydney Metro

The Sydney Metro is the biggest public transport project in Australia to date, adding 66km of standalone metro railway to Sydney's transport network. We are currently in contract with the operators of the Metro City and Southwest project, and are predominantly undertaking work relating to the transport of material to and from the various construction sites.

The Sydney Metro is one part of the major works currently underway to ensure the city's liveability into the future and EPH is proud to add this to our list of public infrastructure projects.



Barangaroo Remediation

Barangaroo is the site of the old Millers Point Gasworks in Barangaroo and sections of the site there had by-products of the old gasworks: tanks containing coal tar, and large volumes of contaminated soil.

Under Venita's Environmental Services team EPH NSW carted and disposed of 450,000 tonne from the site which was extremely difficult to access and had significant pedestrian interface without incident. This achievement is a result of meticulous planning and a commitment from Venita and EPH NSW who put safety and health above all else, ensuring that every person goes home safely.

Pacific Highway Upgrade

The Pacific Highway Upgrade is Australia's largest road infrastructure project to date, underway since 1996. EPH is currently working with CPB Contractors on 34km of Pacific Highway upgrade linking the Maclean to Devils Pulpit section to the south and the Richmond River to Ballina Bypass section in the north.

We are the major contractor for the supply of truck and dog trucks: at our peak, we were running 33 truck and dog trucks moving fill around the project site and hauling other materials too and from the Woolgoolga to Ballina project site.



EPH Queensland Spotlight

Eastern Plant Hire has been pivotal in many of Queensland's (QLD) largest infrastructure projects over the past ten years.

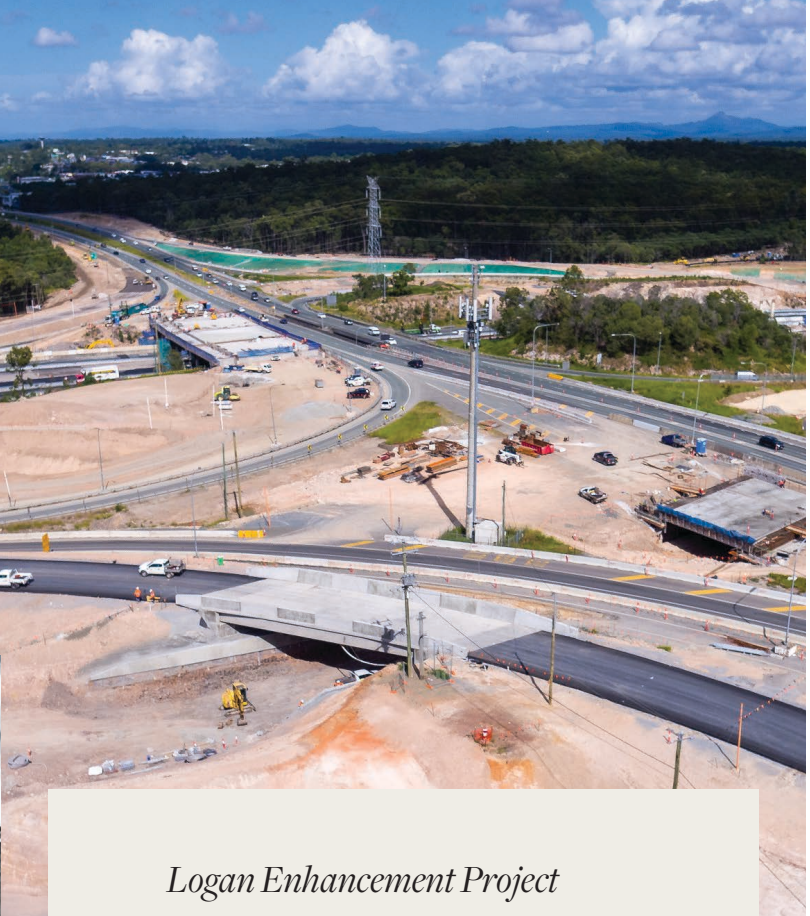
As a relatively new plant hire agency in QLD, we have worked hard to prove our abilities in the local infrastructure industry. Leaning on everything we'd learnt over the years in VIC, we set out to provide earthmoving services with a difference, and to disrupt QLD's earthmoving market.

Our tireless work has awarded us the materials cartage and plant hire contracts on a number of QLD's biggest projects, as well as becoming a reliable source of trucks and plant for local industries.

Pacific Motorway M1/M3/Gateway Merge

One of our proudest projects is the Pacific Motorway M1/M3/Gateway merge, a motorway upgrade part of the larger Pacific Motorway Upgrade Master Plan on one of Australia's busiest highways and national freight routes.

Our fleet of trucks and plant continue to be utilised across project activities, whether it is hauling material or compacting the road, our equipment has been out on the project, helping get the job done right and on time.



Logan Enhancement Project

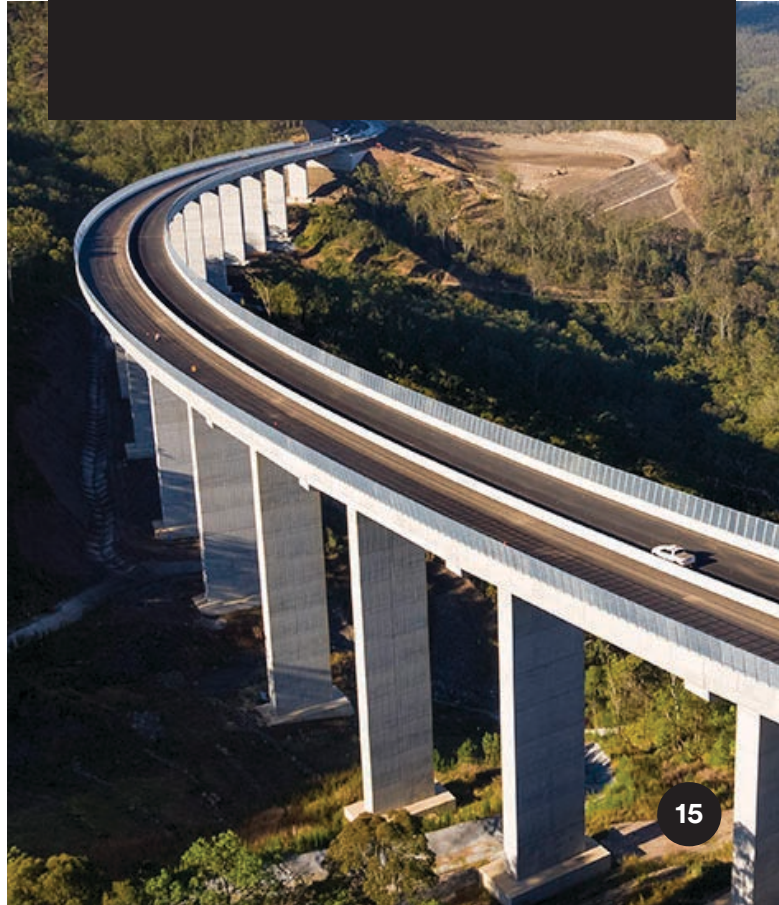
Major construction on the Logan Enhancement Project began in 2017 under CPB Contractors, where our plant and expertise have been utilised for various parts of the QLD-based project. EPH trucks were used throughout the day and night, with our night crew often smashing out 4,000 tonne of profiling before each new day begins.

EPH's versatile services and fleet have helped numerous activities throughout the project so far. Key project contractors have notably integrated EPH plant and trucks on hire to undertake tasks like material transport and loading and disposal, with EPH expertise helping to optimise machine fleet utilisation and facilitate project efficiency.

Toowoomba Second Range Crossing

The Toowoomba Second Range Crossing is a 41km road bypass route to the north of Toowoomba, and is the largest Australian Government funding commitment to a single road project in QLD's history.

We were heavily involved in the material haulage package of work for the project, where tandems, 8-wheelers, 10-wheelers, semi-tippers, ejector trucks and truck & dog combos were utilised.





Earth Solutions Group

Earth Solutions Group (ESG) specialise in initiating, managing and delivering effective land rehabilitation solutions for a variety of land uses.

With over 15 years experience, ESG have provided clients with solutions for a wide range of earthworks projects including: ameliorating low lying land, fixing erosion and sediment control issues, completing subdivision preparation, creating noise and visual barriers, managing the importation of daily cleanfill cover and conducting large scale rehabilitation projects to ensure disused or redundant quarries and cleanfills are compliant with their EPA obligations and ready for productive future land use.

At no cost to our clients, we manage importation, placement, compaction and sculpting Earthworks works for:

- Quarry rehabilitation
- Golf course landscaping
- Farmlands
- Councils
- Cemeteries
- Private landowners
- Subdivisions
- Schools
- Dam construction

“We can provide your development project with the professionalism that it deserves.”

Why us?

ESG manage a number of projects requiring material import across VIC and QLD. We pride ourselves on our commitment to the environment, ensuring all material is site assessed and compliant with relevant state legislation prior to import. In this way, we are able to re-use material that would otherwise be needlessly placed in a landfill.

Through making use of cleanfill, we contribute to the sustainability of our environment while delivering a valuable project to our clients. For added surety we hold a \$10 million dollar pollution insurance policy which covers all sites we manage.

How we do it

ESG manage projects as clean fill importation sites, ensuring all imported material is verified clean fill prior to acceptance, placement and compaction.

Customers entering the site are charged a fee for the import and this offsets the cost of the earthworks being conducted on site.

As part of the EPH Group we pride ourselves on our commitment to the environment while delivering value to our clients.

Find out more at earthsolutionsgroup.com.au

Accreditations & Initiatives

Diversity and Inclusion

EPH recognises the fact that physiological ailments can cause serious mental illness, and as such we have implemented a Flexible Working Arrangement Policy and Procedure to allow employees with psychological or physiological ailments to maintain their employment and access workplace flexibility.

Indigenous Engagement

EPH has implemented a number of policies regarding Equal Employment Opportunity with reference to race and ethnicity. These policies include the Equal Employment Opportunity and Anti-Discrimination, Grievance Resolution and Recruitment and Selection Policies and Procedures. Further, EPH actively engages social enterprises that fund and/or support the employment of Aboriginal persons, including hospitality and education institutions.

Professional Accreditations

Throughout the year, EPH actively engages their Employees by providing them with various learning and development opportunities. Our Employees enjoy a range of individual and group activities as well as the option to participate in formal courses, including leadership and first aid certificates, and HR and industry memberships. EPH looks after us, being the boots on the ground, and making our company a reality.



Workplace Safety

Upon an Employee's commencement at EPH, they partake in a comprehensive Health and Safety Training Program which focusses on policies including how to appropriately handle emergency evacuation, first aid, fires, and hazardous incidents.

Employees are also trained to use our internal incident reporting portal named LinkSafe,

allowing any EPH Employee to efficiently and remotely log an incident. Ongoing training and support is provided to employees on LinkSafe.

Further, HR, Senior Management and all EPH employees, have been trained on Mental Health Awareness, with training on how to identify and escalate concerns about colleagues' mental health.



It doesn't matter if your project is big or small, we are ready, geared up, kitted out, fully trained, and all fuelled up for any project that comes our way.

To get started, give us a call today on 1300 037 437.

